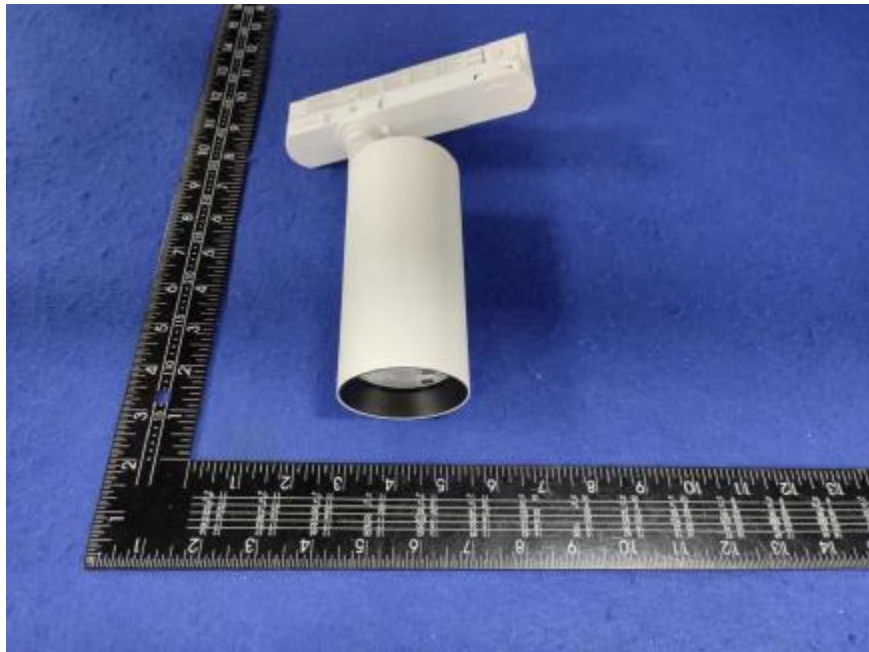


Luminaire Photograph



Light Output Ratio:	95.8%	
Luminaire Power:	28.17 W	
SHR Nominal:	0.75	Calculated using the TM5
SHR Maximum:	0.80	fine grid method.

C Range: 0 - 360DEG
C Interval: 30.0DEG
Test Speed: HIGH
Temperature: 25.3 °C
Operators: zoe
Test Date: 2023-10-5

γ Range: 0 - 180DEG
 γ Interval: 1.0DEG
Test System: EVERFINE GO-SPEX500_V1 SYSTEM V2.00.461
Humidity: 65.0%
Test Distance: 3.160m [K=1.0000]
Remarks: LAMP: BXRE-30G1000-A-83 Ra: 90
LENS: PM-0132C-007-056 50R
DRIVER: ECXe 1050.646 700mA
30minutes warm-up

LUMINOUS INTENSITY DISTRIBUTION DIAGRAM

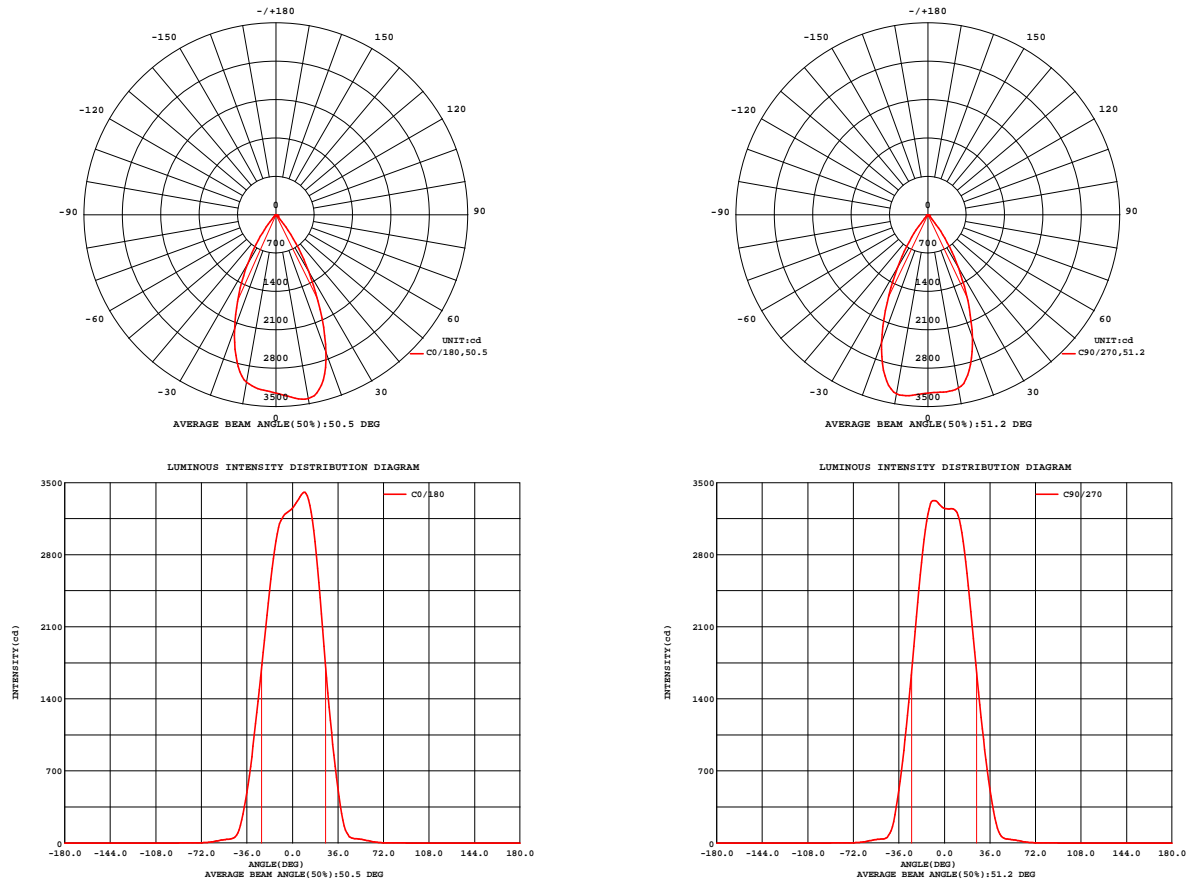


Fig. C0/C180

Fig. C90/C270

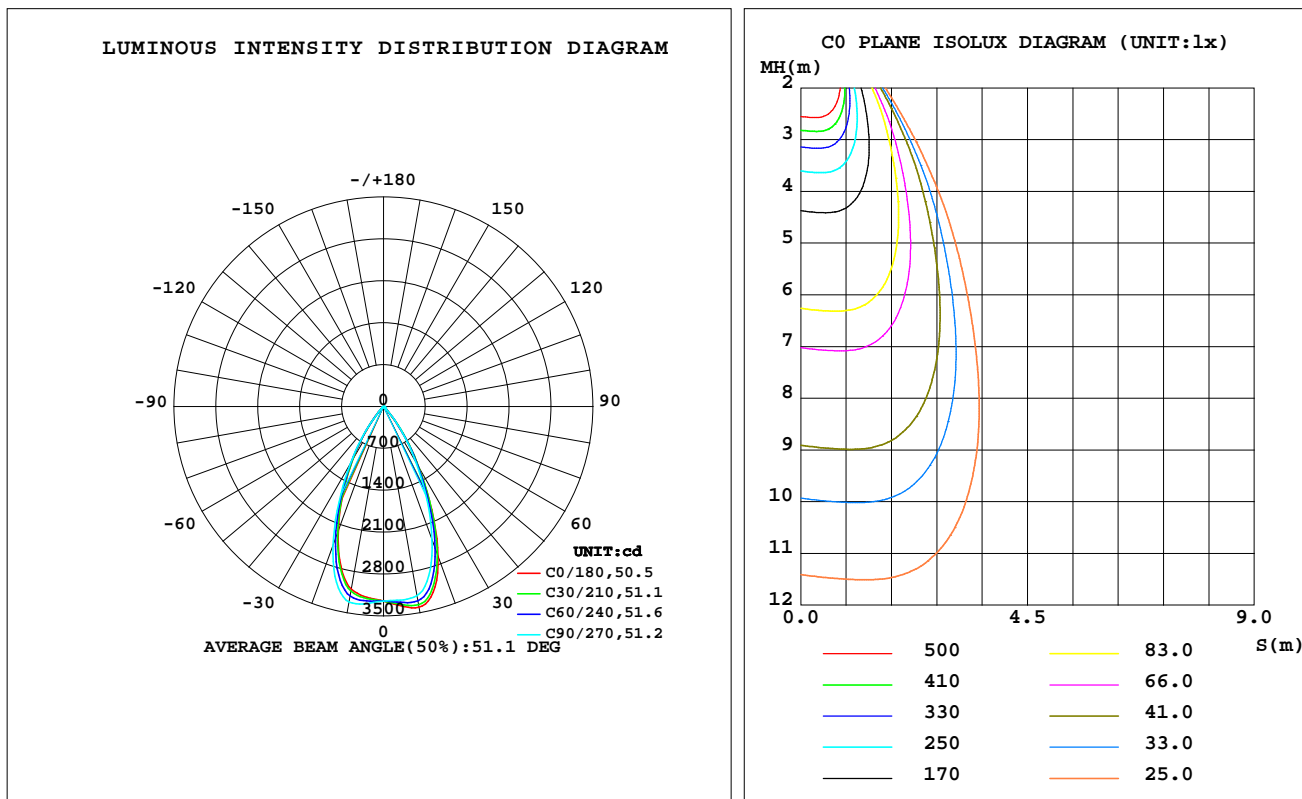
C Range: 0 - 360DEG
C Interval: 30.0DEG
Test Speed: HIGH
Temperature: 25.3 °C
Operators: zoe
Test Date: 2023-10-5

γ Range: 0 - 180DEG
γ Interval: 1.0DEG
Test System: EVERFINE GO-SPEX500_V1 SYSTEM V2.00.461
Humidity: 65.0%
Test Distance: 3.160m [K=1.0000]
Remarks: LAMP: BXRE-30G1000-A-83 Ra: 90
LENS: PM-0132C-007-056 50R
DRIVER: ECXe 1050.646 700mA
30minutes warm-up

LUMINAIRE PHOTOMETRIC TEST REPORT

Test:U:220.08V I:0.1328A P:28.174W PF:0.9611 Freq:49.99Hz Lamp Flux:2523.8x1 lm		
NAME: 2319.200-UA-700	TYPE:	WEIGHT:
SPEC.: 3000K	DIM.:	SERIAL No.: 2310051125
MFR.: RISE	SUR.: 0.002826m2	Shielding Angle:

DATA OF LAMP		PHOTOMETRIC DATA Eff: 85.78 lm/W			
MODEL	Bridgelux	Imax(cd)	3412	S/MH(C0/180)	0.77
NOMINAL POWER(W)	28	LOR(%)	95.8	S/MH(C90/270)	0.79
RATED VOLTAGE(V)	220	TOTAL FLUX(lm)	2416.7	η UP,DN(C0-180)	0.0,48.1
NOMINAL FLUX(lm)	2523.8	CIE CLASS	DIRECT	η UP,DN(C180-360)	0.0,47.7
LAMPS INSIDE	1	η up(%)	0.0	CIBSE SHR NOM	0.75
TEST VOLTAGE(V)	220	η down(%)	95.8	CIBSE SHR MAX	0.80



C Range: 0 - 360DEG
C Interval: 30.0DEG
Test Speed: HIGH
Temperature:25.3℃
Operators:zoe
Test Date:2023-10-5

γ Range: 0 - 180DEG
 γ Interval: 1.0DEG
Test System:EVERFINE GO-SPEX500_V1 SYSTEM V2.00.461
Humidity:65.0%
Test Distance:3.160m [K=1.0000]
Remarks: LAMP:BXRE-30G1000-A-83 Ra:90
LENS:PM-0132C-007-056 50R
DRIVER: ECXe 1050.646 700mA
30minutes warm-up

ZONAL FLUX DIAGRAM

ZONAL FLUX DIAGRAM:

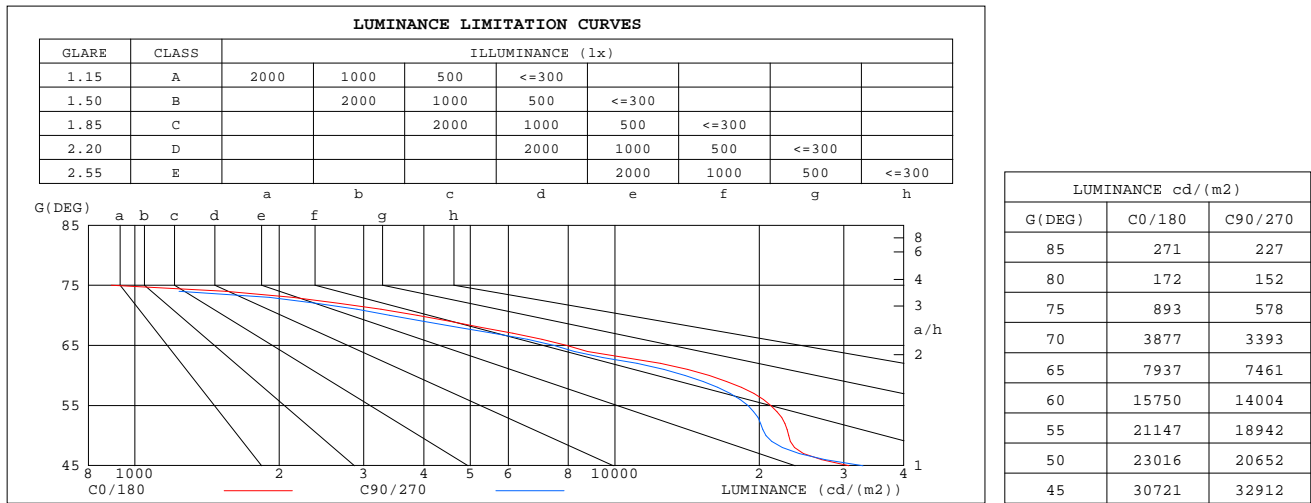
γ	C0	C45	C90	C135	C180	C225	C270	C315	γ	Φ zone	Φ total	%lum,lamp
10	3404	3328	3209	3098	3100	3174	3316	3396	0- 10	312.0	312.0	12.9,12.4
20	2669	2575	2374	2199	2211	2300	2474	2629	10- 20	818.3	1130	46.8,44.8
30	1191	1181	1109	1052	1048	1077	1113	1184	20- 30	796.0	1926	79.7,76.3
40	222.3	240.0	244.0	241.4	226.7	207.9	206.8	232.5	30- 40	387.0	2313	95.7,91.7
50	41.75	40.58	37.52	37.67	37.03	37.70	38.02	41.10	40- 50	65.06	2378	98.4,94.2
60	22.23	21.56	19.79	19.03	18.93	19.03	19.78	21.64	50- 60	27.73	2406	99.6,95.3
70	3.743	3.608	3.280	3.040	3.116	3.169	3.127	3.576	60- 70	9.650	2416	100,95.7
80	0.0843	0.0688	0.0747	0.0681	0.0725	0.0566	0.0661	0.0567	70- 80	1.004	2417	100,95.8
90	0	0	0	0	0	0	0	0	80- 90	0.0518	2417	100,95.8
100	0	0	0	0	0	0	0	0	90-100	0	2417	100,95.8
110	0	0	0	0	0	0	0	0	100-110	0	2417	100,95.8
120	0	0	0	0	0	0	0	0	110-120	0	2417	100,95.8
130	0	0	0	0	0	0	0	0	120-130	0	2417	100,95.8
140	0	0	0	0	0	0	0	0	130-140	0	2417	100,95.8
150	0	0	0	0	0	0	0	0	140-150	0	2417	100,95.8
160	0	0	0	0	0	0	0	0	150-160	0	2417	100,95.8
170	0	0	0	0	0	0	0	0	160-170	0	2417	100,95.8
180	0	0	0	0	0	0	0	0	170-180	0	2417	100,95.8
DEG	LUMINOUS INTENSITY:cd									UNIT:lm		

C Range: 0 - 360DEG
C Interval: 30.0DEG
Test Speed: HIGH
Temperature:25.3℃
Operators:zoe
Test Date:2023-10-5

γ Range: 0 - 180DEG
 γ Interval: 1.0DEG
Test System:EVERFINE GO-SPEX500_V1 SYSTEM V2.00.461
Humidity:65.0%
Test Distance:3.160m [K=1.0000]
Remarks: LAMP:BXRE-30G1000-A-83 Ra:90
LENS:PM-0132C-007-056 50R
DRIVER: ECXe 1050.646 700mA
30minutes warm-up

LUMINANCE LIMITATION CURVES

Test:U:220.08V I:0.1328A P:28.174W PF:0.9611 Freq:49.99Hz Lamp Flux:2523.8x1 lm		
NAME: 2319.200-UA-700	TYPE:	WEIGHT:
SPEC.: 3000K	DIM.:	SERIAL No.: 2310051125
MFR.: RISE	SUR.: 0.002826m2	Shielding Angle:



C Range: 0 - 360DEG
C Interval: 30.0DEG
Test Speed: HIGH
Temperature:25.3℃
Operators:zoe
Test Date:2023-10-5

γ Range: 0 - 180DEG
γ Interval: 1.0DEG
Test System:EVERFINE GO-SPEX500_V1 SYSTEM V2.00.461
Humidity:65.0%
Test Distance:3.160m [K=1.0000]
Remarks: LAMP:BXRE-30G1000-A-83 Ra:90
LENS:PM-0132C-007-056 50R
DRIVER: ECXe 1050.646 700mA
30minutes warm-up

CU AND LUMINAIRE BUDGETARY ESTIMATE DIAGRAM

Test:U:220.08V I:0.1328A P:28.174W PF:0.9611 Freq:49.99Hz
Lamp Flux:2523.8x1 lm

NAME: 2319.200-UA-700

TYPE:

WEIGHT:

SPEC.: 3000K

DIM.:

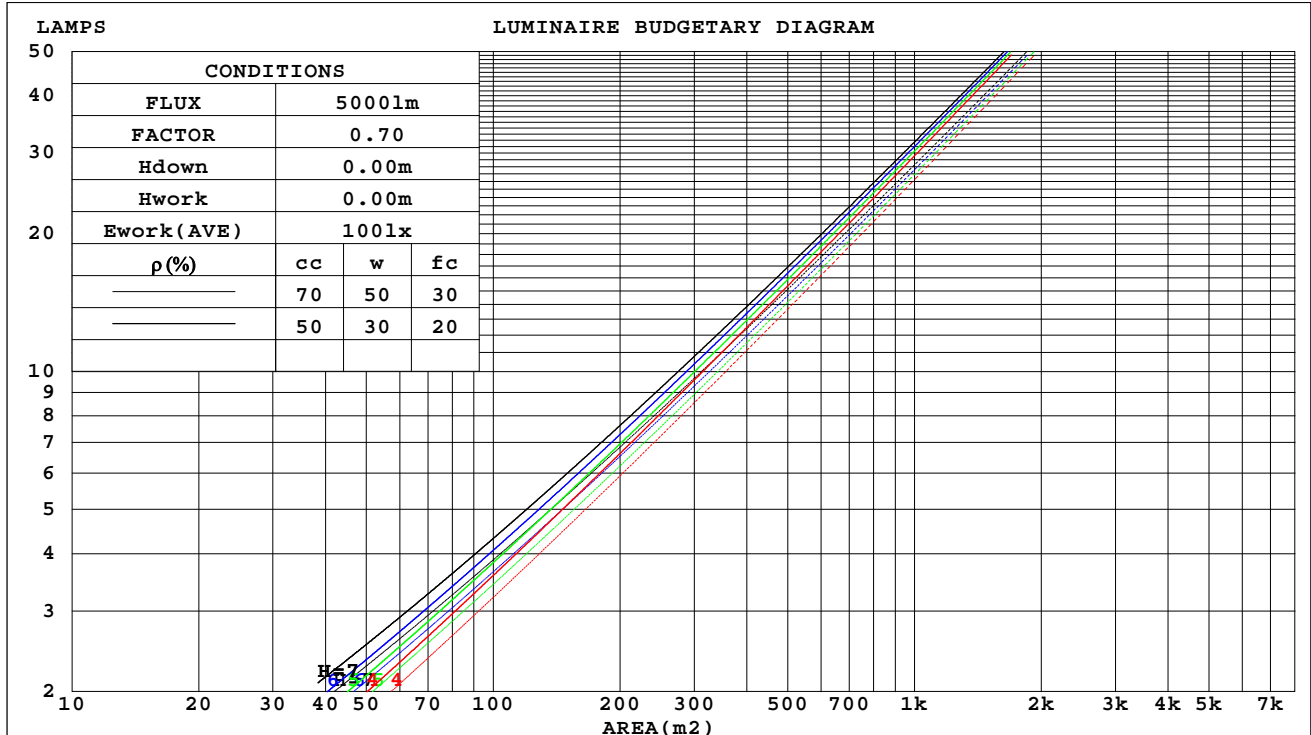
SERIAL No.: 2310051125

MFR.: RISE

SUR.: 0.002826m2

Shielding Angle:

ρ_{cc}	80%			70%			50%			30%			10%			0
ρ_w	50%	30%	10%	50%	30%	10%	50%	30%	10%	50%	30%	10%	50%	30%	10%	0
ρ_{fc}	20%			20%			20%			20%			20%			0
RCR	RCR:Room Cavity Ratio Coefficients of Utilization(CU)															
0.0	1.14	1.14	1.14	1.11	1.11	1.11	1.06	1.06	1.06	1.02	1.02	1.02	.98	.98	.98	.96
1.0	1.07	1.04	1.02	1.04	1.02	1.01	1.01	.99	.98	.97	.96	.95	.94	.93	.92	.90
2.0	.00	.96	.93	.98	.95	.92	.95	.92	.90	.92	.90	.88	.90	.88	.86	.85
3.0	.94	.89	.85	.92	.88	.85	.90	.86	.83	.87	.85	.82	.85	.83	.81	.79
4.0	.88	.83	.79	.87	.82	.79	.85	.81	.78	.83	.80	.77	.81	.78	.76	.75
5.0	.83	.78	.74	.82	.77	.73	.80	.76	.73	.79	.75	.72	.77	.74	.72	.70
6.0	.78	.73	.69	.78	.73	.69	.76	.72	.68	.75	.71	.68	.74	.70	.68	.66
7.0	.74	.69	.65	.73	.68	.65	.72	.68	.64	.71	.67	.64	.70	.67	.64	.63
8.0	.70	.65	.61	.70	.65	.61	.69	.64	.61	.68	.64	.61	.67	.63	.60	.59
9.0	.67	.61	.58	.66	.61	.58	.65	.61	.58	.65	.60	.57	.64	.60	.57	.56
10.0	.63	.58	.55	.63	.58	.55	.62	.58	.55	.62	.57	.54	.61	.57	.54	.53



C Range: 0 - 360DEG
C Interval: 30.0DEG
Test Speed: HIGH
Temperature:25.3℃
Operators:zoe
Test Date:2023-10-5

γ Range: 0 - 180DEG
 γ Interval: 1.0DEG
Test System:EVERFINE GO-SPEX500_V1 SYSTEM V2.00.461
Humidity:65.0%
Test Distance:3.160m [K=1.0000]
Remarks: LAMP:BXRE-30G1000-A-83 Ra:90
LENS:PM-0132C-007-056 50R
DRIVER: ECXe 1050.646 700mA
30minutes warm-up

WEC AND CCEC

Test:U:220.08V I:0.1328A P:28.174W PF:0.9611 Freq:49.99Hz Lamp Flux:2523.8x1 lm		
NAME: 2319.200-UA-700	TYPE:	WEIGHT:
SPEC.: 3000K	DIM.:	SERIAL No.: 2310051125
MFR.: RISE	SUR.: 0.002826m2	Shielding Angle:

pcc	80%			70%			50%			30%			10%			0
pw	50%	30%	10%	50%	30%	10%	50%	30%	10%	50%	30%	10%	50%	30%	10%	0
pfc	20%			20%			20%			20%			20%			0
RCR	RCR:Room Cavity Ratio						Wall Exitance Coefficients(WEC)									
0.0																
1.0	.161	.092	.029	.155	.088	.028	.143	.082	.026	.132	.076	.024	.122	.071	.023	
2.0	.154	.084	.026	.149	.082	.025	.138	.077	.024	.129	.072	.023	.121	.068	.022	
3.0	.146	.078	.023	.142	.076	.023	.133	.072	.022	.125	.069	.021	.118	.065	.020	
4.0	.139	.072	.021	.135	.071	.021	.128	.068	.020	.121	.065	.020	.115	.062	.019	
5.0	.133	.068	.020	.129	.066	.019	.123	.064	.019	.117	.062	.018	.111	.060	.018	
6.0	.127	.063	.018	.124	.062	.018	.118	.061	.018	.113	.059	.017	.108	.057	.017	
7.0	.121	.060	.017	.118	.059	.017	.114	.057	.017	.109	.056	.016	.105	.054	.016	
8.0	.116	.057	.016	.114	.056	.016	.109	.055	.016	.105	.053	.015	.101	.052	.015	
9.0	.111	.054	.015	.109	.053	.015	.105	.052	.015	.102	.051	.015	.098	.050	.014	
10.0	.107	.051	.014	.105	.051	.014	.101	.050	.014	.098	.049	.014	.095	.048	.014	

pcc	80%			70%			50%			30%			10%			0
pw	50%	30%	10%	50%	30%	10%	50%	30%	10%	50%	30%	10%	50%	30%	10%	0
pfc	20%			20%			20%			20%			20%			0
RCR	RCR:Room Cavity Ratio			Ceiling Cavity Exitance Coefficients(CCEC)												
0.0	.182	.182	.182	.156	.156	.156	.106	.106	.106	.061	.061	.061	.020	.020	.020	
1.0	.163	.151	.139	.140	.129	.120	.096	.089	.083	.055	.051	.048	.018	.017	.016	
2.0	.148	.127	.109	.127	.109	.094	.087	.076	.066	.050	.044	.039	.016	.014	.013	
3.0	.136	.109	.087	.116	.094	.075	.080	.065	.053	.046	.038	.031	.015	.012	.010	
4.0	.126	.094	.071	.108	.082	.061	.074	.057	.043	.043	.033	.026	.014	.011	.008	
5.0	.117	.083	.058	.101	.072	.051	.069	.050	.036	.040	.030	.021	.013	.010	.007	
6.0	.110	.074	.049	.094	.064	.042	.065	.045	.030	.038	.026	.018	.012	.009	.006	
7.0	.104	.067	.041	.089	.058	.036	.062	.041	.025	.036	.024	.015	.012	.008	.005	
8.0	.098	.061	.035	.084	.053	.031	.058	.037	.022	.034	.022	.013	.011	.007	.004	
9.0	.093	.056	.031	.080	.048	.027	.056	.034	.019	.032	.020	.011	.010	.007	.004	
10.0	.089	.052	.027	.077	.045	.023	.053	.032	.017	.031	.019	.010	.010	.006	.003	

C Range: 0 - 360DEG
C Interval: 30.0DEG
Test Speed: HIGH
Temperature:25.3℃
Operators:zoe
Test Date:2023-10-5

γ Range: 0 - 180DEG
γ Interval: 1.0DEG
Test System:EVERFINE GO-SPEX500_V1 SYSTEM V2.00.461
Humidity:65.0%
Test Distance:3.160m [K=1.0000]
Remarks: LAMP:BXRE-30G1000-A-83 Ra:90
LENS:PM-0132C-007-056 50R
DRIVER: ECXe 1050.646 700mA
30minutes warm-up

UGR(Unified Glare Rating) Table

Test:U:220.08V I:0.1328A P:28.174W PF:0.9611 Freq:49.99Hz Lamp Flux:2523.8x1 lm										
NAME: 2319.200-UA-700					TYPE:			WEIGHT:		
SPEC.: 3000K					DIM.:			SERIAL No.: 2310051125		
MFR.: RISE					SUR.: 0.002826m2			Shielding Angle:		
ceiling/cavity	0.7	0.7	0.5	0.5	0.3	0.7	0.7	0.5	0.5	0.3
walls	0.5	0.3	0.5	0.3	0.3	0.5	0.3	0.5	0.3	0.3
working plane	0.2	0.2	0.2	0.2	0.2	0.2	0.2	0.2	0.2	0.2
Room dimensions	Viewed crosswise					Viewed endwise				
x = 2H y = 2H	19.1	20.0	19.3	20.1	20.3	18.8	19.7	19.0	19.9	20.0
3H	18.9	19.7	19.2	19.9	20.1	18.7	19.5	18.9	19.7	19.9
4H	18.8	19.6	19.1	19.8	20.1	18.6	19.4	18.9	19.6	19.8
6H	18.8	19.5	19.0	19.7	20.0	18.5	19.2	18.8	19.5	19.7
8H	18.7	19.4	19.0	19.7	19.9	18.4	19.1	18.8	19.4	19.7
12H	18.7	19.3	19.0	19.6	19.9	18.4	19.1	18.7	19.3	19.6
4H 2H	18.9	19.6	19.1	19.8	20.1	18.6	19.4	18.9	19.6	19.8
3H	18.7	19.4	19.0	19.6	19.9	18.4	19.1	18.8	19.4	19.7
4H	18.6	19.2	19.0	19.5	19.8	18.4	19.0	18.7	19.3	19.6
6H	18.5	19.0	18.9	19.4	19.7	18.3	18.8	18.6	19.1	19.5
8H	18.5	19.0	18.9	19.3	19.7	18.2	18.7	18.6	19.0	19.4
12H	18.4	18.9	18.8	19.2	19.6	18.2	18.6	18.6	19.0	19.4
8H 4H	18.5	19.0	18.9	19.3	19.7	18.2	18.7	18.6	19.1	19.4
6H	18.4	18.8	18.8	19.2	19.6	18.1	18.5	18.5	18.9	19.3
8H	18.3	18.7	18.8	19.1	19.5	18.0	18.4	18.5	18.8	19.3
12H	18.2	18.6	18.7	19.0	19.5	18.0	18.3	18.5	18.7	19.2
12H 4H	18.4	18.9	18.8	19.2	19.6	18.2	18.6	18.6	19.0	19.4
6H	18.3	18.7	18.8	19.1	19.5	18.0	18.4	18.5	18.8	19.3
8H	18.2	18.6	18.7	19.0	19.5	18.0	18.3	18.5	18.7	19.2
Variations with the observer position at spacings(CIE Pub.117):										
S = 1.0H	+ 3.7 / - 7.4					+ 3.7 / - 8.0				
1.5H	+ 6.2 / - 6.3					+ 6.2 / - 6.5				
2.0H	+ 1.9 / - 3.9					+ 2.7 / - 3.9				

CIE Pub.117, 2524 lm Total Lamp Luminous Flux Correct (8log(F/F0) = 3.2)
Area: 0.002826 m2

C Range: 0 - 360DEG
C Interval: 30.0DEG
Test Speed: HIGH
Temperature:25.3℃
Operators:zoe
Test Date:2023-10-5

γ Range: 0 - 180DEG
γ Interval: 1.0DEG
Test System:EVERFINE GO-SPEX500_V1 SYSTEM V2.00.461
Humidity:65.0%
Test Distance:3.160m [K=1.0000]
Remarks: LAMP:BXRE-30G1000-A-83 Ra:90
LENS:PM-0132C-007-056 50R
DRIVER: ECXe 1050.646 700mA
30minutes warm-up

UTILIZATION FACTORS TABLE

Test:U:220.08V I:0.1328A P:28.174W PF:0.9611 Freq:49.99Hz Lamp Flux:2523.8x1 lm		
NAME: 2319.200-UA-700	TYPE:	WEIGHT:
SPEC.: 3000K	DIM.:	SERIAL No.: 2310051125
MFR.: RISE	SUR.: 0.002826m2	Shielding Angle:

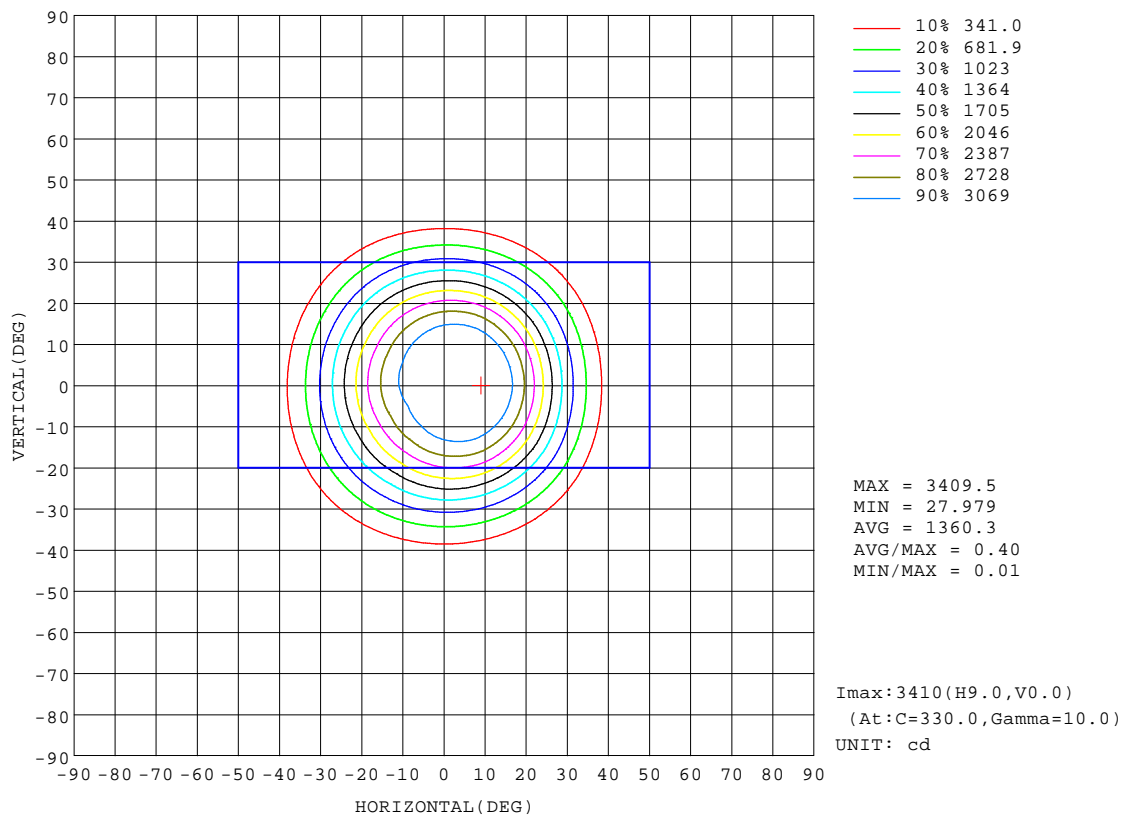
REFLECTANCE										
Ceiling	0.8	0.8	0.8	0.7	0.7	0.7	0.5	0.5	0.5	0
Walls	0.7	0.5	0.3	0.7	0.5	0.3	0.7	0.5	0.3	0
Working plane	0.2	0.2	0.2	0.2	0.2	0.2	0.2	0.2	0.2	0
ROOM INDEX	UTILIZATION FACTORS(PERCENT) $k(RI) \times RCR = 5$									
k = 0.60	85	79	76	85	79	76	84	79	76	72
0.80	92	87	83	91	86	83	90	86	83	79
1.00	96	91	88	95	91	87	94	90	87	83
1.25	100	95	92	99	94	91	97	93	91	87
1.50	102	98	95	101	97	94	99	96	93	89
2.00	105	101	98	103	100	97	101	98	96	91
2.50	106	103	100	105	101	99	102	99	97	92
3.00	107	104	102	106	103	101	103	100	99	93
4.00	109	107	105	107	105	103	104	102	101	94
5.00	110	108	107	108	107	105	105	103	102	95
ROOM INDEX	UF(total)									Direct
According to DIN EN 13032-2 2004			Suspended					SHRNOM = 1.25		

C Range: 0 - 360DEG
C Interval: 30.0DEG
Test Speed: HIGH
Temperature:25.3℃
Operators:zoe
Test Date:2023-10-5

γ Range: 0 - 180DEG
γ Interval: 1.0DEG
Test System:EVERFINE GO-SPEX500_V1 SYSTEM V2.00.461
Humidity:65.0%
Test Distance:3.160m [K=1.0000]
Remarks: LAMP:BXRE-30G1000-A-83 Ra:90
LENS:PM-0132C-007-056 50R
DRIVER: ECXe 1050.646 700mA
30minutes warm-up

ISOCANDELA DIAGRAM

Test:U:220.08V I:0.1328A P:28.174W PF:0.9611 Freq:49.99Hz Lamp Flux:2523.8x1 lm		
NAME: 2319.200-UA-700	TYPE:	WEIGHT:
SPEC.: 3000K	DIM.:	SERIAL No.: 2310051125
MFR.: RISE	SUR.: 0.002826m2	Shielding Angle:

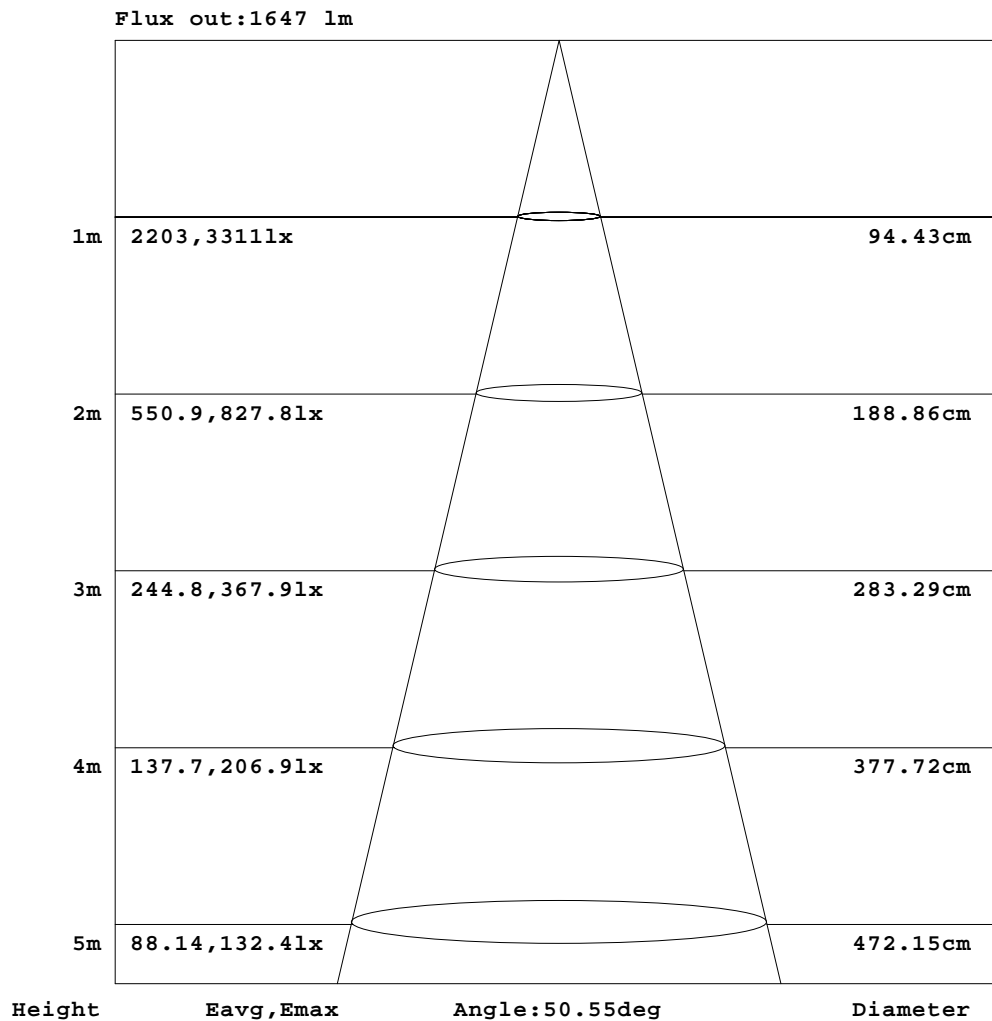


C Range: 0 - 360DEG
C Interval: 30.0DEG
Test Speed: HIGH
Temperature:25.3℃
Operators:zoe
Test Date:2023-10-5

γ Range: 0 - 180DEG
γ Interval: 1.0DEG
Test System:EVERFINE GO-SPEX500_V1 SYSTEM V2.00.461
Humidity:65.0%
Test Distance:3.160m [K=1.0000]
Remarks: LAMP:BXRE-30G1000-A-83 Ra:90
LENS:PM-0132C-007-056 50R
DRIVER: ECXe 1050.646 700mA
30minutes warm-up

AAI Figure

Test:U:220.08V I:0.1328A P:28.174W PF:0.9611 Freq:49.99Hz Lamp Flux:2523.8x1 lm		
NAME: 2319.200-UA-700	TYPE:	WEIGHT:
SPEC.: 3000K	DIM.:	SERIAL No.: 2310051125
MFR.: RISE	SUR.: 0.002826m2	Shielding Angle:



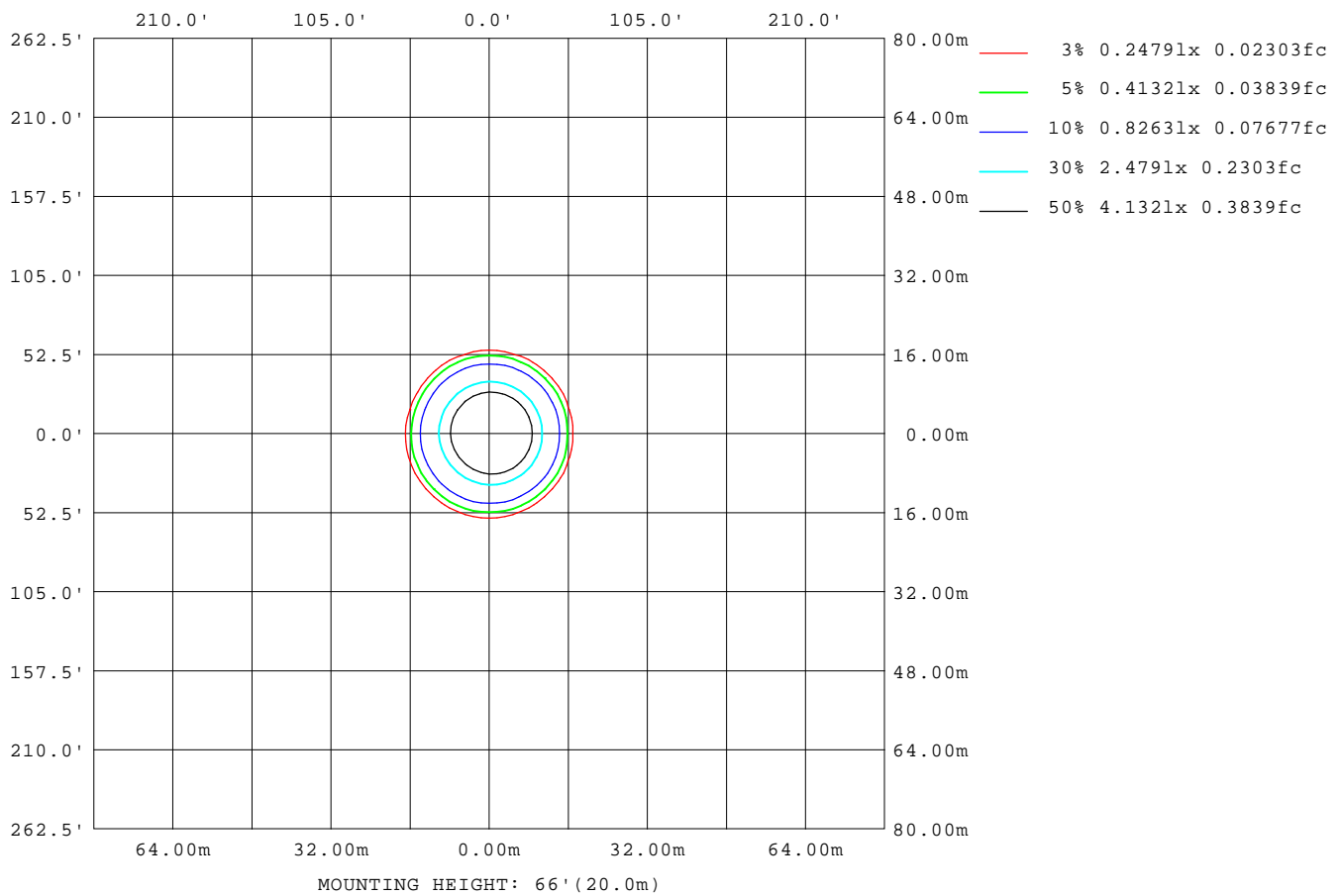
Note: The Curves indicate the illuminated area and the average illumination when the luminaire is at different distance.

C Range: 0 - 360DEG
C Interval: 30.0DEG
Test Speed: HIGH
Temperature: 25.3 °C
Operators: zoe
Test Date: 2023-10-5

γ Range: 0 - 180DEG
γ Interval: 1.0DEG
Test System: EVERFINE GO-SPEX500_V1 SYSTEM V2.00.461
Humidity: 65.0%
Test Distance: 3.160m [K=1.0000]
Remarks: LAMP: BXRE-30G1000-A-83 Ra: 90
LENS: PM-0132C-007-056 50R
DRIVER: ECXe 1050.646 700mA
30minutes warm-up

ISOLUX DIAGRAM

Test:U:220.08V I:0.1328A P:28.174W PF:0.9611 Freq:49.99Hz Lamp Flux:2523.8x1 lm		
NAME: 2319.200-UA-700	TYPE:	WEIGHT:
SPEC.: 3000K	DIM.:	SERIAL No.: 2310051125
MFR.: RISE	SUR.: 0.002826m2	Shielding Angle:



C Range: 0 - 360DEG
C Interval: 30.0DEG
Test Speed: HIGH
Temperature:25.3℃
Operators:zoe
Test Date:2023-10-5

γ Range: 0 - 180DEG
γ Interval: 1.0DEG
Test System:EVERFINE GO-SPEX500_V1 SYSTEM V2.00.461
Humidity:65.0%
Test Distance:3.160m [K=1.0000]
Remarks: LAMP:BXRE-30G1000-A-83 Ra:90
LENS:PM-0132C-007-056 50R
DRIVER: ECXe 1050.646 700mA
30minutes warm-up

LED Avg.L Report

Test:U:220.08V I:0.1328A P:28.174W PF:0.9611 Freq:49.99Hz Lamp Flux:2523.8x1 lm		
NAME: 2319.200-UA-700	TYPE:	WEIGHT:
SPEC.: 3000K	DIM.:	SERIAL No.: 2310051125
MFR.: RISE	SUR.: 0.002826m2	Shielding Angle:

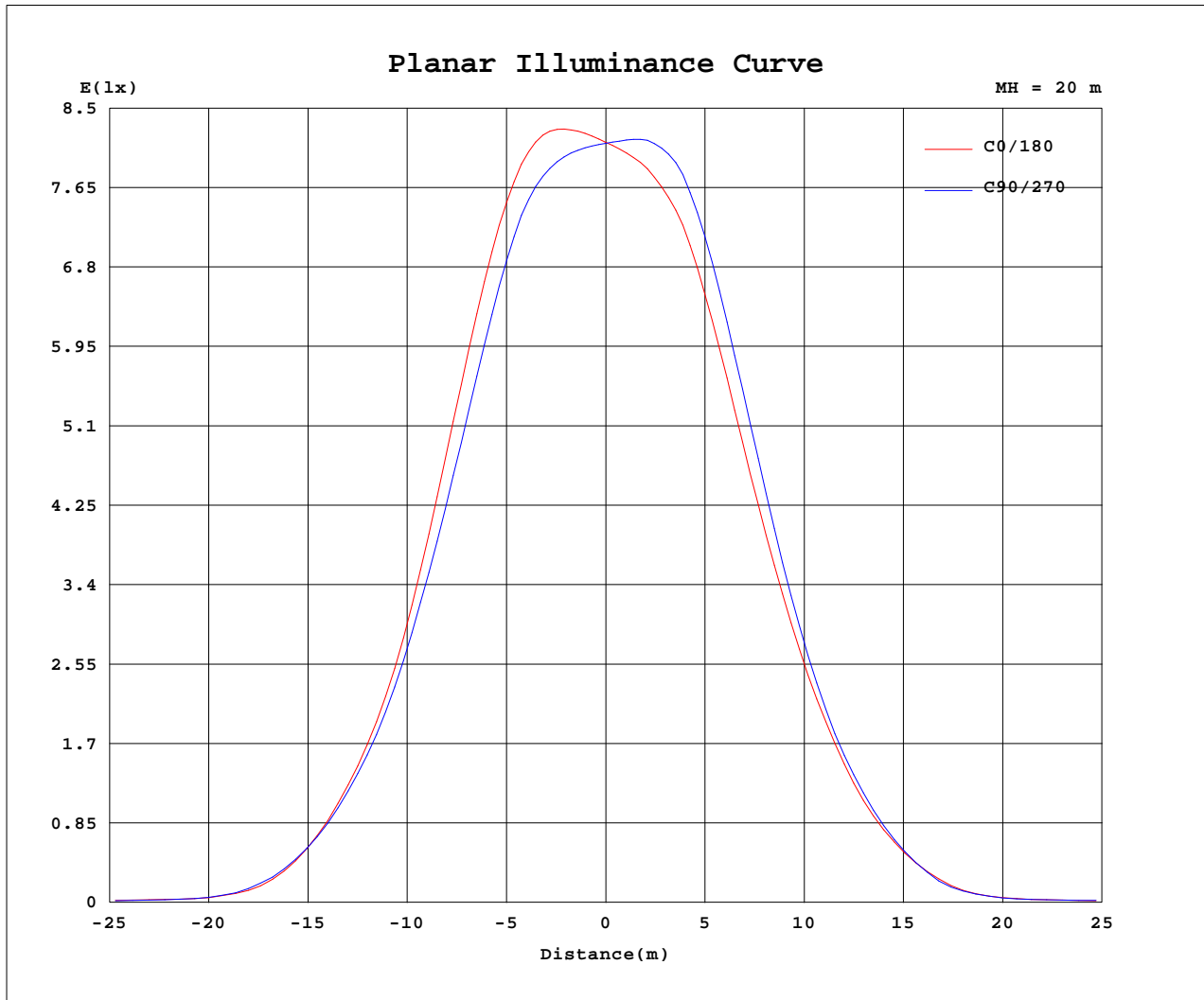
AvgL	cd/m2
L_0~180(65)av	7465
L_0~180(75)av	594
L_0~180(85)av	254
L_90~270(65)av	7276
L_90~270(75)av	497
L_90~270(85)av	217
L_45(65)av	7387
L_45(75)av	564
L_45(85)av	170

Standard: GB/T 29293-2012

C Range: 0 - 360DEG
C Interval: 30.0DEG
Test Speed: HIGH
Temperature:25.3℃
Operators:zoe
Test Date:2023-10-5

γ Range: 0 - 180DEG
γ Interval: 1.0DEG
Test System:EVERFINE GO-SPEX500_V1 SYSTEM V2.00.461
Humidity:65.0%
Test Distance:3.160m [K=1.0000]
Remarks: LAMP:BXRE-30G1000-A-83 Ra:90
LENS:PM-0132C-007-056 50R
DRIVER: ECXe 1050.646 700mA
30minutes warm-up

Planar Illuminance Curve



C Range: 0 - 360DEG
 C Interval: 30.0DEG
 Test Speed: HIGH
 Temperature: 25.3 °C
 Operators: zoe
 Test Date: 2023-10-5

γ Range: 0 - 180DEG
 γ Interval: 1.0DEG
 Test System: EVERFINE GO-SPEX500_V1 SYSTEM V2.00.461
 Humidity: 65.0%
 Test Distance: 3.160m [K=1.0000]
 Remarks: LAMP: BXRE-30G1000-A-83 Ra: 90
 LENS: PM-0132C-007-056 50R
 DRIVER: ECXe 1050.646 700mA
 30minutes warm-up

LUMINOUS DISTRIBUTION INTENSITY DATA

Test:U:220.08V I:0.1328A P:28.174W PF:0.9611 Freq:49.99Hz Lamp Flux:2523.8x1 lm		
NAME: 2319.200-UA-700	TYPE:	WEIGHT:
SPEC.: 3000K	DIM.:	SERIAL No.: 2310051125
MFR.: RISE	SUR.: 0.002826m2	Shielding Angle:

Table--1

UNIT: cd

C(DEG) γ (DEG)	0	30	60	90	120	150	180	210	240	270	300	330						
0	3250	3250	3250	3250	3250	3250	3250	3250	3250	3250	3250	3250						
5	3341	3317	3283	3246	3211	3196	3201	3221	3260	3306	3334	3346						
10	3404	3362	3295	3209	3121	3076	3100	3133	3216	3316	3380	3412						
15	3214	3157	3067	2930	2788	2725	2761	2794	2911	3042	3155	3210						
20	2669	2626	2525	2374	2228	2170	2211	2247	2352	2474	2592	2666						
25	1909	1906	1818	1726	1610	1585	1608	1635	1705	1767	1850	1910						
30	1191	1206	1156	1109	1060	1044	1048	1058	1097	1113	1164	1203						
35	638	661	634	620	603	583	567	568	595	599	629	657						
40	222	239	241	244	243	240	227	199	217	207	230	235						
45	61.3	66.4	68.4	65.8	66.4	63.1	60.2	54.6	56.3	55.5	59.8	65.0						
50	41.8	41.1	40.1	37.5	37.6	37.8	37.0	37.2	38.2	38.0	40.2	42.0						
55	34.2	33.9	32.8	30.7	30.3	30.5	30.5	30.3	31.4	31.2	33.2	34.4						
60	22.2	22.0	21.1	19.8	19.1	19.0	18.9	18.6	19.4	19.8	21.2	22.1						
65	9.47	9.45	9.15	8.91	8.61	8.37	8.36	8.21	8.42	8.47	8.87	9.47						
70	3.74	3.73	3.48	3.28	3.02	3.06	3.12	3.10	3.23	3.13	3.38	3.78						
75	0.65	0.65	0.51	0.42	0.23	0.23	0.22	0.21	0.24	0.30	0.55	0.67						
80	0.08	0.07	0.07	0.07	0.07	0.07	0.07	0.06	0.05	0.07	0.05	0.06						
85	0.07	0.05	0.05	0.06	0.04	0.05	0.06	0.04	0.04	0.05	0.04	0.04						
90	0.00	0.00	0.00	0.00	0.00	0.00	0.00	0.00	0.00	0.00	0.00	0.00						
95	0.00	0.00	0.00	0.00	0.00	0.00	0.00	0.00	0.00	0.00	0.00	0.00						
100	0.00	0.00	0.00	0.00	0.00	0.00	0.00	0.00	0.00	0.00	0.00	0.00						
105	0.00	0.00	0.00	0.00	0.00	0.00	0.00	0.00	0.00	0.00	0.00	0.00						
110	0.00	0.00	0.00	0.00	0.00	0.00	0.00	0.00	0.00	0.00	0.00	0.00						
115	0.00	0.00	0.00	0.00	0.00	0.00	0.00	0.00	0.00	0.00	0.00	0.00						
120	0.00	0.00	0.00	0.00	0.00	0.00	0.00	0.00	0.00	0.00	0.00	0.00						
125	0.00	0.00	0.00	0.00	0.00	0.00	0.00	0.00	0.00	0.00	0.00	0.00						
130	0.00	0.00	0.00	0.00	0.00	0.00	0.00	0.00	0.00	0.00	0.00	0.00						
135	0.00	0.00	0.00	0.00	0.00	0.00	0.00	0.00	0.00	0.00	0.00	0.00						
140	0.00	0.00	0.00	0.00	0.00	0.00	0.00	0.00	0.00	0.00	0.00	0.00						
145	0.00	0.00	0.00	0.00	0.00	0.00	0.00	0.00	0.00	0.00	0.00	0.00						
150	0.00	0.00	0.00	0.00	0.00	0.00	0.00	0.00	0.00	0.00	0.00	0.00						
155	0.00	0.00	0.00	0.00	0.00	0.00	0.00	0.00	0.00	0.00	0.00	0.00						
160	0.00	0.00	0.00	0.00	0.00	0.00	0.00	0.00	0.00	0.00	0.00	0.00						
165	0.00	0.00	0.00	0.00	0.00	0.00	0.00	0.00	0.00	0.00	0.00	0.00						
170	0.00	0.00	0.00	0.00	0.00	0.00	0.00	0.00	0.00	0.00	0.00	0.00						
175	0.00	0.00	0.00	0.00	0.00	0.00	0.00	0.00	0.00	0.00	0.00	0.00						
180	0.00	0.00	0.00	0.00	0.00	0.00	0.00	0.00	0.00	0.00	0.00	0.00						

C Range: 0 - 360DEG
C Interval: 30.0DEG
Test Speed: HIGH
Temperature:25.3℃
Operators:zoe
Test Date:2023-10-5

γ Range: 0 - 180DEG
γ Interval: 1.0DEG
Test System:EVERFINE GO-SPEX500_V1 SYSTEM V2.00.461
Humidity:65.0%
Test Distance:3.160m [K=1.0000]
Remarks: LAMP:BXRE-30G1000-A-83 Ra:90
LENS:PM-0132C-007-056 50R
DRIVER: ECXe 1050.646 700mA
30minutes warm-up